

Community Controls Firefly3™ Type: FIRIII390LMPB2K3

FCC ID: SU7FIR390LMPB2K3

This device complies with Part 15 of the FCC Rules.

Operation is subject to the following two conditions:

- (1) This device may not cause harmful interference, and
- (2) this device must accept interference received, including interference that may cause undesired operation.

NOTICE

Any changes or modifications to Community Controls equipment not expressly approved by Community Controls could void the manufacturer's warranty and could void the user's authority to operate the equipment.

WARRANTY

The warranty period of Community Controls Firefly3™ transmitters is twenty-four (24) months. This warranty shall begin on the date the transmitter is manufactured. During the warranty period, the product will be repaired or replaced (at the sole discretion of Community Controls) if the product does not operate correctly due to a defective component. This warranty does not extend to (a) the transmitter case, which can be damaged by conditions outside the control of Community Controls, or (b) battery life of the transmitter. This warranty is further limited by the following disclaimer of warranty and liability:

EXCEPT AS SET FORTH ABOVE, COMMUNITY CONTROLS MAKES NO WARRANTIES REGARDING THE GOODS, EXPRESS OR IMPLIED, INCLUDING WARRANTY OF MERCHANTABILITY OR WARRANTY OF FITNESS FOR A PARTICULAR PURPOSE. BUYER MAKES NO RELIANCE ON ANY REPRESENTATION OF COMMUNITY CONTROLS, EXPRESS OR IMPLIED, WITH REGARD TO THE GOODS AND ACCEPTS THEM "AS-IS/WHERE-IS". COMMUNITY CONTROLS SELLS THE GOODS TO BUYER ON CONDITION THAT COMMUNITY CONTROLS WILL HAVE NO LIABILITY OF ANY KIND AS A RESULT OF THE SALE. BUYER AGREES THAT COMMUNITY CONTROLS SHALL HAVE NO LIABILITY FOR DAMAGES OF ANY KIND, WHETHER DIRECT, INCIDENTAL OR CONSEQUENTIAL DAMAGES, INCLUDING INJURIES TO PERSONS OR PROPERTY, TO BUYER, ITS EMPLOYEES OR AGENTS, AS A RESULT OF THE SALE. BUYER ALSO AGREES TO HOLD COMMUNITY CONTROLS HARMLESS FROM ANY CLAIMS BUYER, OR ANY THIRD PARTY, MAY HAVE AS A RESULT OF BUYER'S USE OR DISPOSAL OF THE GOODS. BUYER HAS READ THIS DISCLAIMER AND AGREES WITH ITS TERMS IN CONSIDERATION OF RECEIVING THE GOODS.

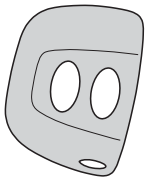


2480 South 3850 West, Suite A
Salt Lake City, UT 84120
(800) 284-2837
(866) 867-3637 Fax
www.communitycontrols.com

Manual - 390 2 Button

Community
Controls

*Firefly*³
TRANSMITTER



*Thank you for choosing a Community Controls product.
Please read this manual carefully before using the product.*

Made in Taiwan. Copywrite © 2015 Community Controls.

CONTENTS

1 - TRANSMITTER OVERVIEW

- 1A - General information
- 1B - Technical specifications
- 1C - Main components

2 - NUMBERING

3 - PROGRAMMING

4 - OPERATION

5 - BATTERY ACCESS

6 - TROUBLESHOOTING

1A - General information

The Community Controls- Firefly3™ Transmitter is a very small (1-1/2" x 2-1/8" x 3/8") key chain style wireless transmitter operating at 390 MHz. The Firefly™ achieves its small size by using state-of-the-art, surface mount components. It has been designed for use with and is compatible with all programmable receivers operating at a 390 frequency manufactured by Community Controls.

2 - PROGRAMMING

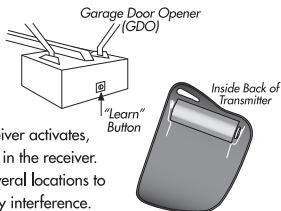
Find the "learn" button on your existing garage door opener (the unit with the motor located on the ceiling of your garage). Press and hold this "learn" button for 2 seconds and then release. The LED light located beside the "learn" button will go on. Then press the button on your new transmitter remote for 1 second and then release to activate it. The LED light on your existing garage door opener will flash, then go off. Your remote transmitter is now programmed into your existing garage door opener and will operate your garage door.

3- OPERATION

Press the garage door opener button to activate your garage door.

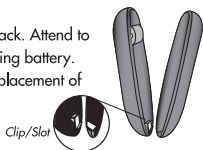
Step 1. Push the button on a distance of about ten feet. If the receiver activates, the transmitter has been memorized in the receiver.

Step 2. Test the transmitter from several locations to discover any "blind spots" caused by interference.



4 - BATTERY ACCESS

Remove set screw and open case from back. Attend to proper polarity when installing or replacing battery. See "coding" for proper removal and replacement of back cover.



5 - TROUBLESHOOTING

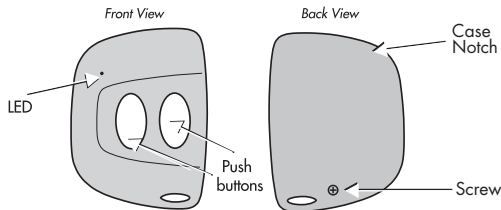
PROBLEM	SOLUTION
The system does not receive the transmitter signal. The transmitter LED will not light.	• Ensure clear plastic battery insulator has been removed; OR Replace the transmitter battery.
The system does not receive the transmitter signal. The transmitter LED is ON.	Check to ensure the transmitter has been memorized into the receiver.
The operating range is reduced.	Replace the transmitter battery.

The A23 battery has a shelf life of about 1 year. The product fully complies with Part 15 of the FCC Regulations.

1B - Technical Specifications

Operating frequency :	390 MHz
Number of buttons :	2
Battery :	1 ea. 12V A23
Number combinations:	1 Billion
Operating temperature :	-20°F - 100°F
Overall dimensions :	1-1/2 x 2-1/8 x 3/8 inch
Weight:	1 oz.

1C - Main components



Black Case with Orange Buttons