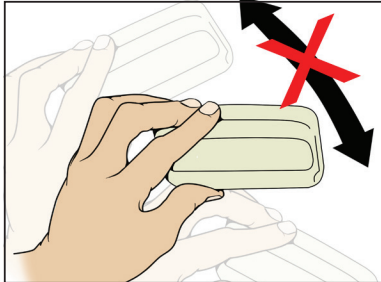


AT5402 & AT5406 Access Control Tag Installation Instructions for Your Parking Access System

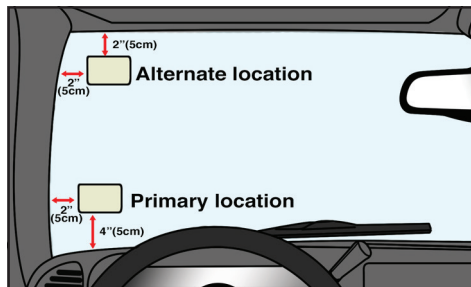
These instructions are for tags that are read by a reader system mounted at the driver's side of vehicle.

**Do Not Present The Tag
By Holding In Hand**



- Tag will NOT work if not mounted on windshield.

1 Choose a Location for Your Tag



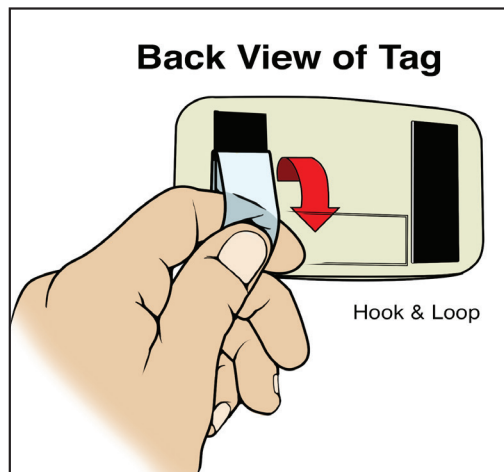
- Place on inside of windshield out of driver's line of sight.
- **Best Location:**
4 inches from bottom, 2 inches from left
- **Alternate Location:** If you have another tag or inspection sticker, place in upper left corner.

2 Prep Your Windshield

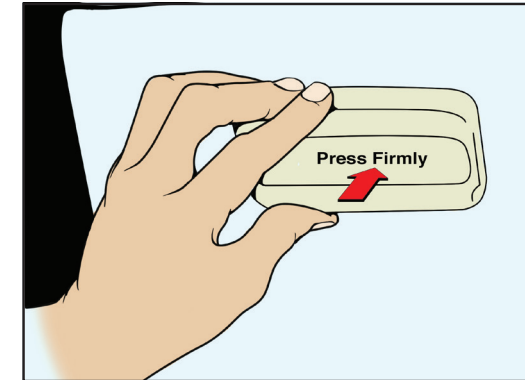
- Windshield should be at least 50°F (10°C).
- Use heater/defroster, if necessary.
- Clean and wipe windshield dry before installing tag.



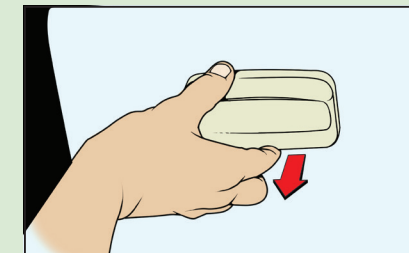
3 Peel off Tape



4 Press Tag Firmly Against Windshield a Few Seconds in Chosen Location



Removing Tag



- Grasp along top or bottom edge and pull slowly.