

Transmitter TRALUN318LIPWxKC



LUNA
Transmitters

with Patented
ChargeGuard™
Circuit



Thank you for choosing a Community Controls product.
Please read this manual carefully before using the product.
Made in Italy. Copyright © 2024 by Community Controls

CONTENTS

1 - TRANSMITTER OVERVIEW

- 1A - General information
- 1B - Technical specifications
- 1C - Types
- 1D - Main components
- 2 - NUMBERING
- 3 - PROGRAMMING
- 4 - OPERATION
- 5 - BATTERY ACCESS
- 6 - BATTERY STATUS
- 7 - TROUBLESHOOTING

1A - General information

The Community Controls LUNA types TRALUN318LIPW1KC, TRALUN318LIPW2KC, TRALUN318LIPW4KC are key chain style transmitters operating at 318MHz. They have been designed for use with programmable telephone entry, security, and access control systems operating with a 318 MHz frequency receiver. The protocol is Linear® compatible and the code sent by the transmitter

includes a 14 bit security code which allows up to 16384 code combinations and 6 bits of facility code, which allows up to 64 facility codes. The Community Controls - R318 receiver which operates with this transmitter has a Wiegand 26 bit format output, which will operate any type of access control system equipped to accept a 26 bit Wiegand input. The products fully comply with Part 15 of FCC Regulations.

1B - Technical specifications

Operating frequency:	318 MHz
Number of keys:	1 - 2 - 4
Battery :	12V - 23A
Battery life:	18 - 24 months
Protocol :	Linear®
Number combinations :	65,536
Different Facilities codes	16
Operating temperature:	-20°F ÷ +131 °F (-20°C ÷ +55°C)
Overall dimensions:	2.51" x 1.52" x 0.58"
Weight:	1 oz. (20 gr.)

1C - Types

TRALUN318LIPW1K-C: 1 button transmitter
TRALUN318LIPW2K-C: 2 buttons transmitter
TRALUN318LIPW4K-C: 4 buttons transmitter

1D - Main components

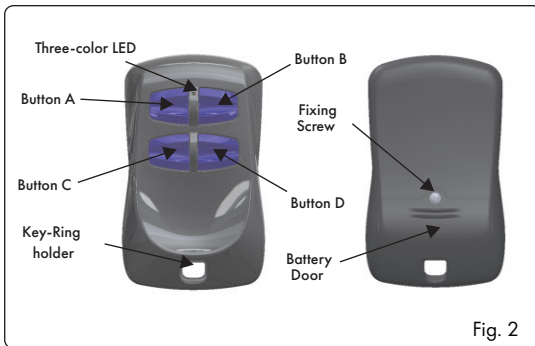


Fig. 2

2 - NUMBERING

Each transmitter is manufactured and sold with a different factory-set serial number.

3 - PROGRAMMING

The transmitter must be programmed into your system memory. Your own installer or reseller will provide you the necessary instructions for your system.

4 - OPERATION

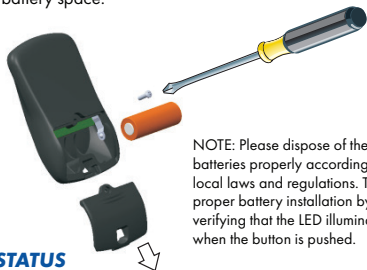
A- Firmly depress the button until the small green LED illuminates.

B- After the LED has illuminated, release the button.

If the device you are attempting to activate does not respond, repeat steps A and B or consult section 7 (Troubleshooting) of this manual.




5 - BATTERY ACCESS

To access the battery unscrew the back screw using a Phillips-head screwdriver. Slide down the battery door and remove the empty battery. Replace it with a 12V- A23 battery, respecting the polarity as indicated on the bottom of the battery space.



NOTE: Please dispose of the batteries properly according to local laws and regulations. Test proper battery installation by verifying that the LED illuminates when the button is pushed.

6 - BATTERY STATUS

Led color	Battery Level	TX Status
 Led GREEN	Normal level	~6000 pulses [*] - Normal range
 Led ORANGE	Attention level	Max 300 pulses [*] - Low range
 Led RED	Low level	Replace battery - No range

[*] : Depends on batteries type and operating conditions . Batteries life calculated with 1-sec pulses.

ATTENTION:

- Remove and immediately recycle or dispose of used batteries according to local regulations and keep away from children.
 - Do NOT dispose of batteries in household trash or incinerate.
 - Even used batteries may cause severe injury or death.
 - Call a local poison control center for treatment information.
 - Non-rechargeable batteries are not to be recharged.
 - Do not force discharge, recharge, disassemble, heat above +131 °F or incinerate.
- Doing so may result in injury due to venting, leakage or explosion resulting in chemical burns.

7 - TROUBLESHOOTING

PROBLEM	SOLUTION
The system does not receive the transmitter signal. The transmitter LED is ON	Check to verify the transmitter is programmed into your system
The operating range is reduced	Replace the transmitter batteries

Community Controls - Type : TRALUN318LIPWxKC FCC ID : SU7318TRS8

This device complies with Part. 15 of the FCC Rules Operation is subject to the following two conditions:

- (1) This device may not cause harmful interference, and
- (2) this device must accept interference received, including interference that may cause undesired operation.

Notice

Any changes or modification to Community Controls equipment not expressly approved by Community Controls could void the manufacturer's warranty.

WARRANTY

The warranty period of Community Controls 318 transmitters is 5 years, beginning from the manufacturing date of the transmitter. During this period, if the product does operate correctly, due to a defective component, the product will be repaired or replaced at the sole discretion of Community Controls. The warranty does not extend to the transmitter case which can be damaged by conditions outside the control of Community Controls or to battery life.



2480 South 3850 West, Suite A - Salt Lake City, UT 84120
(800) 284-2837 - Fax: (801) 972-1202
www.communitycontrols.com - websales@communitycontrols.com